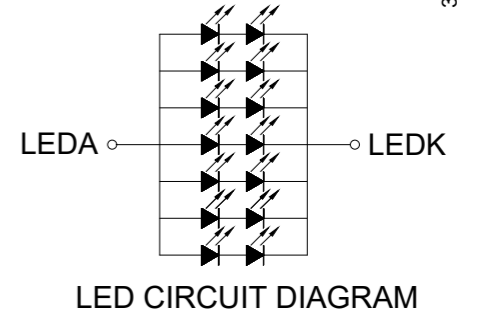
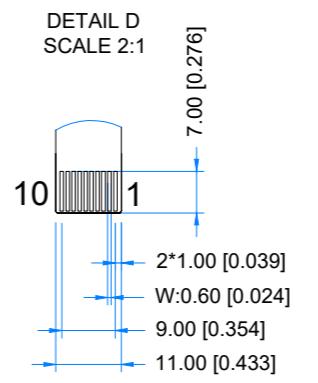
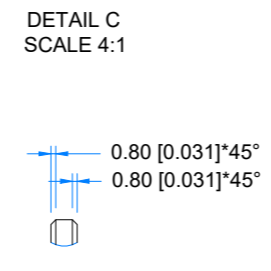
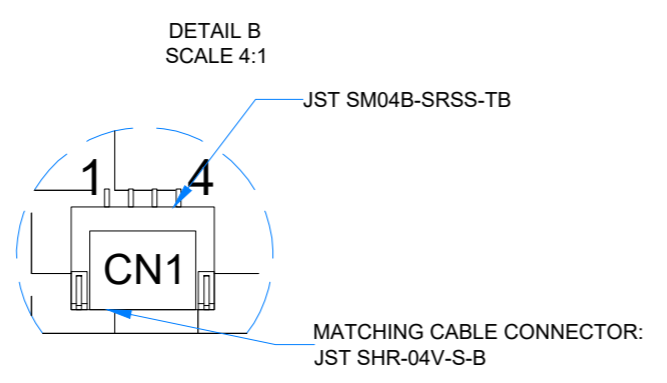
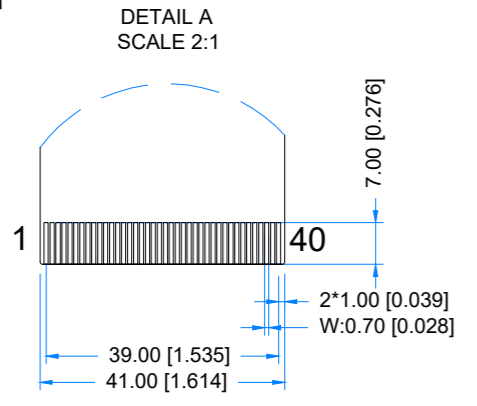
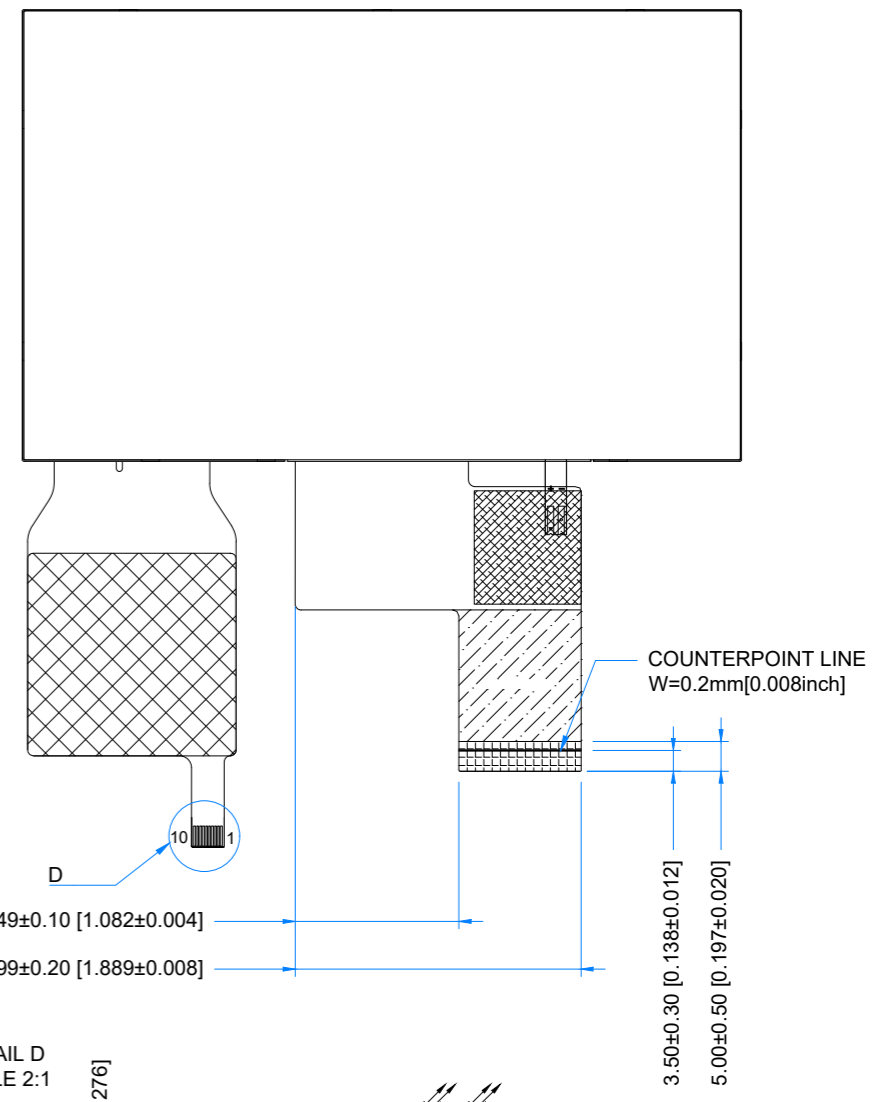
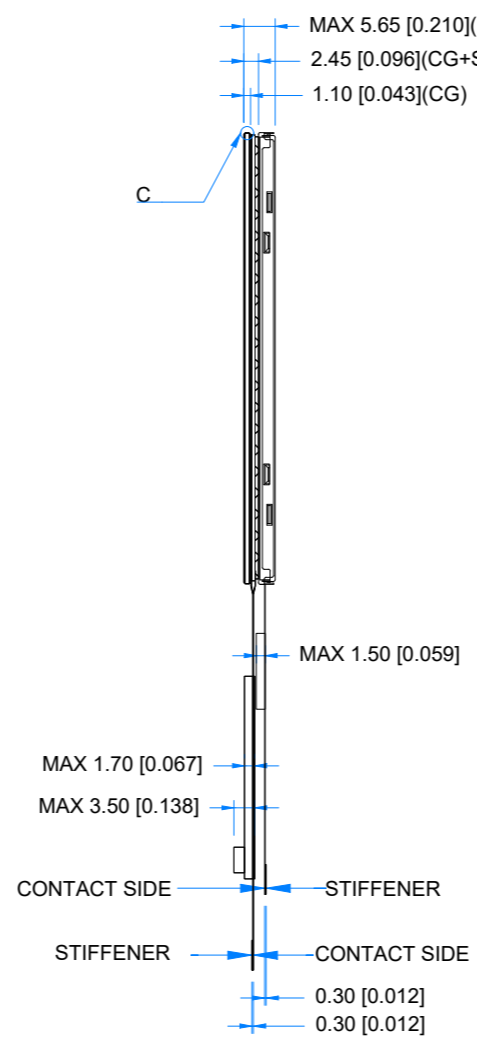
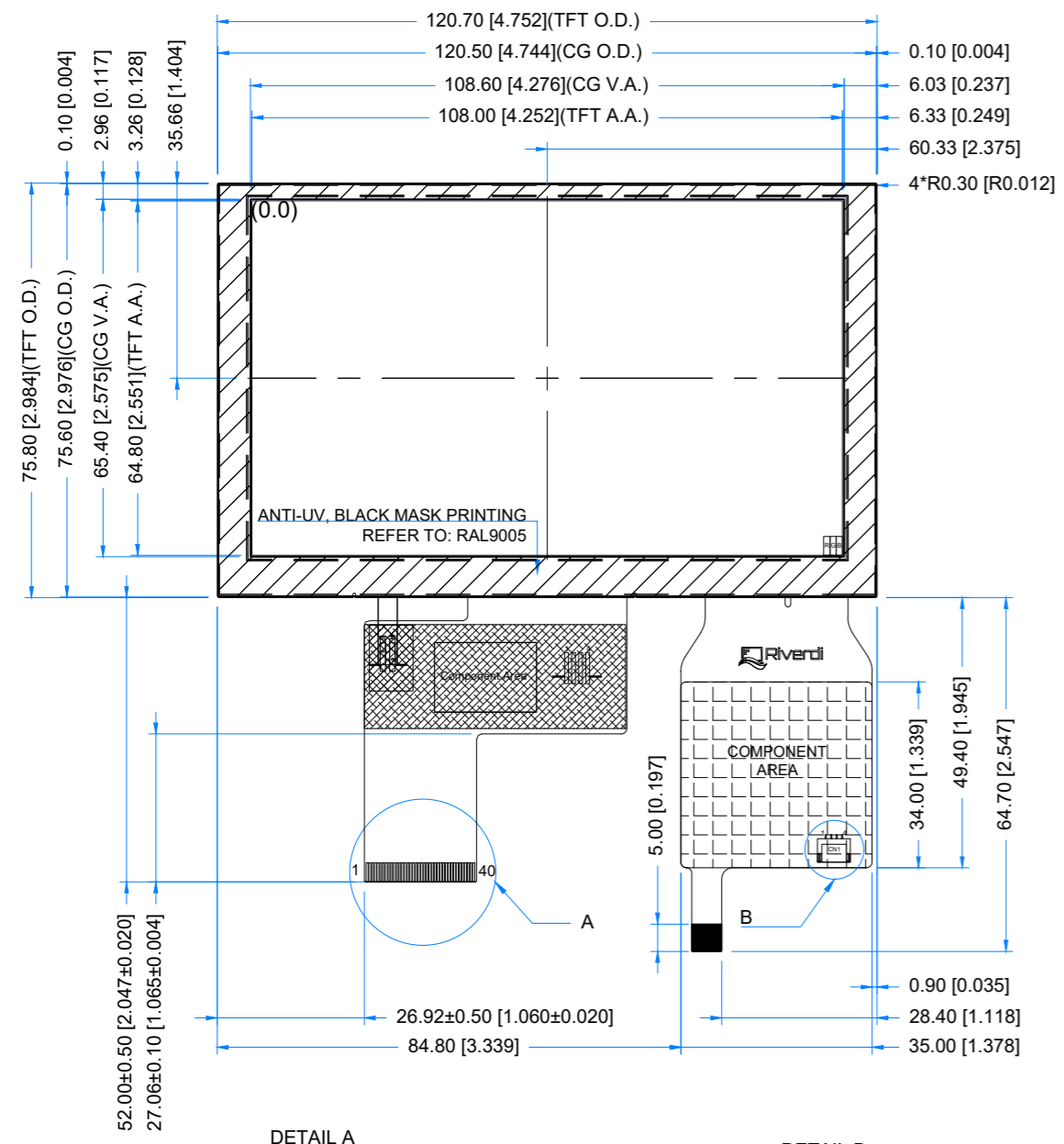


Revision:	Changes:	Date:
1.0	Initial Case	2026.03.19



PINOUT ON THE 2ND PAGE

TFT NOTES:
 1. DISPLAY TYPE: TRANSMISSIVE, NORMALLY BLACK, IPS
 2. RESOLUTION: 800x480
 3. VIEWING ANGLE: FREE
 4. INTERFACE: RGB
 5. IC CONTROLLER: ST7262-G4
 6. OPERATING VOLTAGE: 3.3V
 7. BACKLIGHT: 14-LED WHITE, Vf=12.0V, If=140mA

TP NOTES:
 1. TP STRUCTURE: G+G
 2. CG THICKNESS: 1.1mm[0.043inch]
 3. DRIVER IC: ILI2132A
 4. INTERFACE: USB; I2C
 5. OPERATING VOLTAGE: 3.3V(I2C); 5.0V(USB)

GENERAL NOTES:
 1. SURFACE LUMINANCE: 800cd/m²
 2. OPERATING TEMPERATURE: -20°C ~ 70°C
 3. STORAGE TEMPERATURE: -30°C ~ 80°C
 4. WITHOUT INDIVIDUAL TOLERANCE: ±0.3mm
 5. RoHS COMPLIANT

PN:	RVT50HQTNWCA0 V2.0A
SN:	
DRAWN:	M.Stabinski
CHECKED:	M.Wierzbowski
APPR:	M.Wierzbowski

		2026.03.19	1:1.27	
		2026.03.19	[mm]	
2026.03.19	ISO A3	P. 1 of 1		



TFT CONNECTOR			
Pin No.	Desc.	Pin No.	Desc.
1	VLED-	21	B0
2	VLED+	22	B1
3	GND	23	B2
4	VDD	24	B3
5	R0	25	B4
6	R1	26	B5
7	R2	27	B6
8	R3	28	B7
9	R4	29	GND
10	R5	30	DCLK
11	R6	31	DISP
12	R7	32	HSYNC
13	G0	33	VSYNC
14	G1	34	DE
15	G2	35	NC
16	G3	36	GND
17	G4	37	NC
18	G5	38	NC
19	G6	39	NC
20	G7	40	NC

TOUCH PANNEL CONNECTOR			
Pin No.	Desc.	Pin No.	Desc.
1	USB_GND	6	I2C_VDD(3.3V)
2	USB_VDD(5.0V)	7	I2C_RST
3	USB_D-	8	I2C_SCL
4	USB_D+	9	I2C_INT
5	I2C_GND	10	I2C_SDA

CN1			
Pin No.	Desc.	Pin No.	Desc.
1	USB_VDD(5.0V)	3	USB_D+
2	USB_D-	4	USB_GND